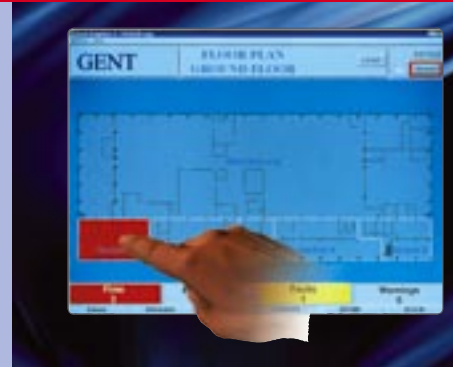


GENT
by Honeywell

Section 8:

Supervisor Graphical Display



8: SUPERVISOR GRAPHICAL DISPLAY

Supervisor

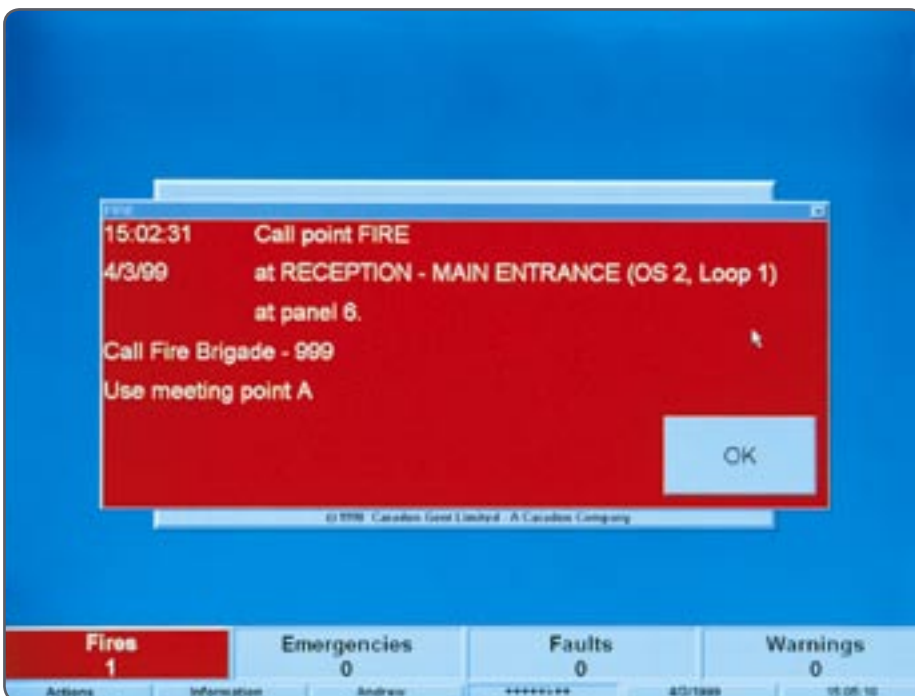
GENT

by Honeywell

1 Overview



2 Clear Messages



Supervisor Graphics Terminals are helping to protect large, complex buildings such as the British Library and Heathrow Airport.

Used in conjunction with Gent's Vigilon fire detection system, Supervisor provides powerful additional features.

Users benefit from accurate pictorial information as soon as emergencies occur. Reaction and decision making can be instantaneous.



Supervisor provides 4 lines of 40 characters of auxiliary text. This can be used to provide the operator with additional information or provide further instruction.

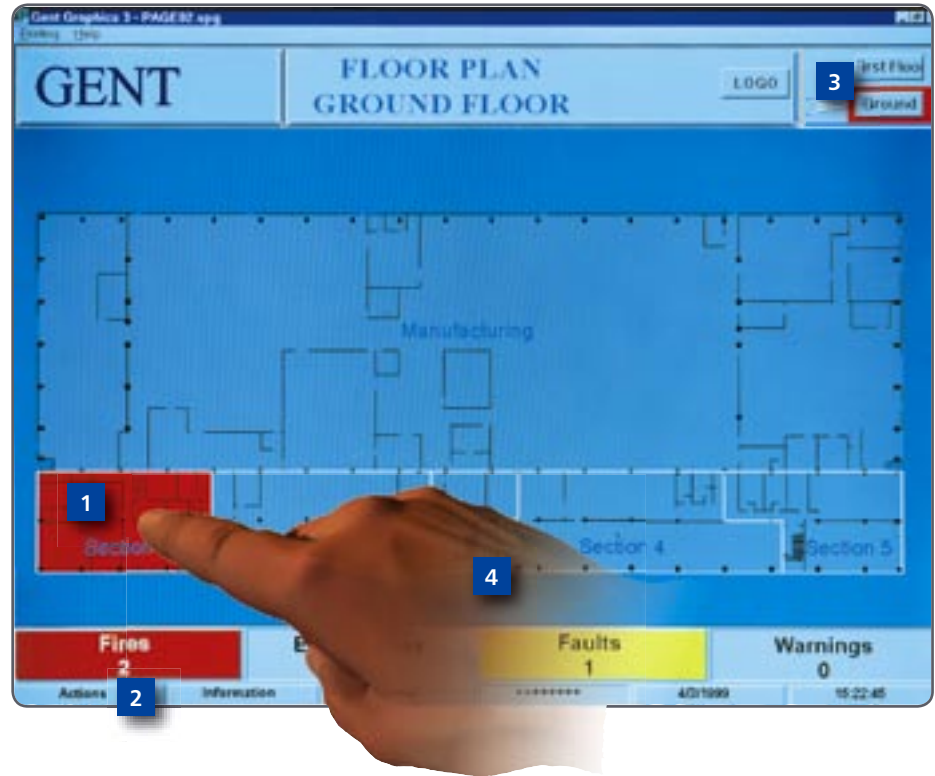
- Simple, uncluttered displays.
- Bold colour changes.
- Large, clear text.

Supervisor

Powerful features include:

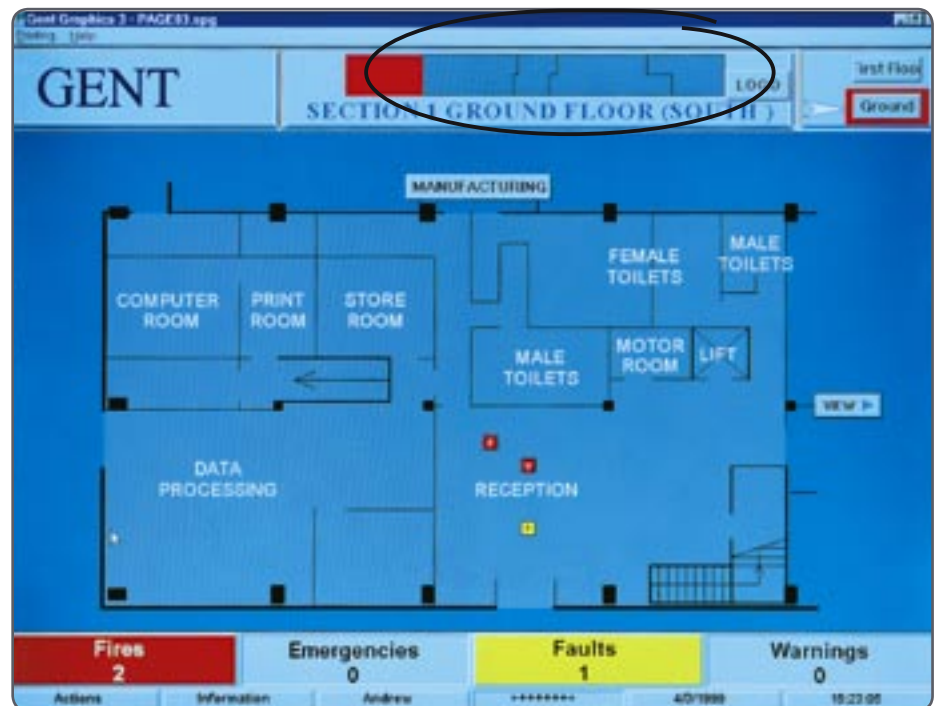
- 1 Colour change areas or optional flashing displays
- 2 Action buttons
- 3 "Hot-areas" for navigation
- 4 Touchscreen navigation
- 5 Unlimited number of pages.

3 Graphics Features



Supervisor includes a "thumbnail sketch" of the floor plan on each page so it is easy to identify at a glance what part of the building the user is viewing. Every fire is shown on each page.

4 Optional Touchscreen Navigation



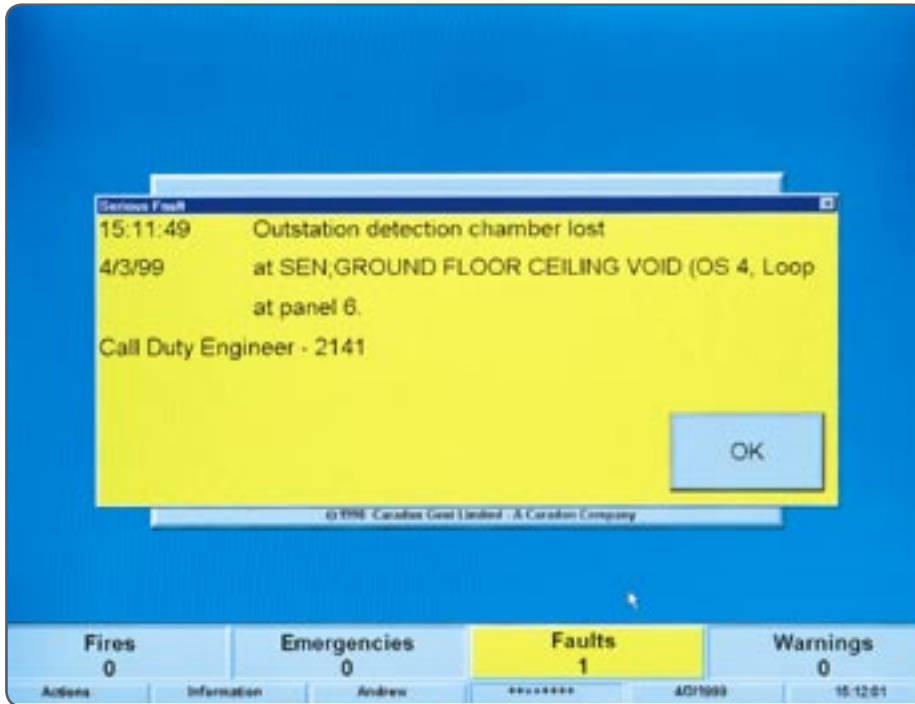
8: SUPERVISOR GRAPHICAL DISPLAY

Supervisor

GENT

by Honeywell

5 Day-to-day Management

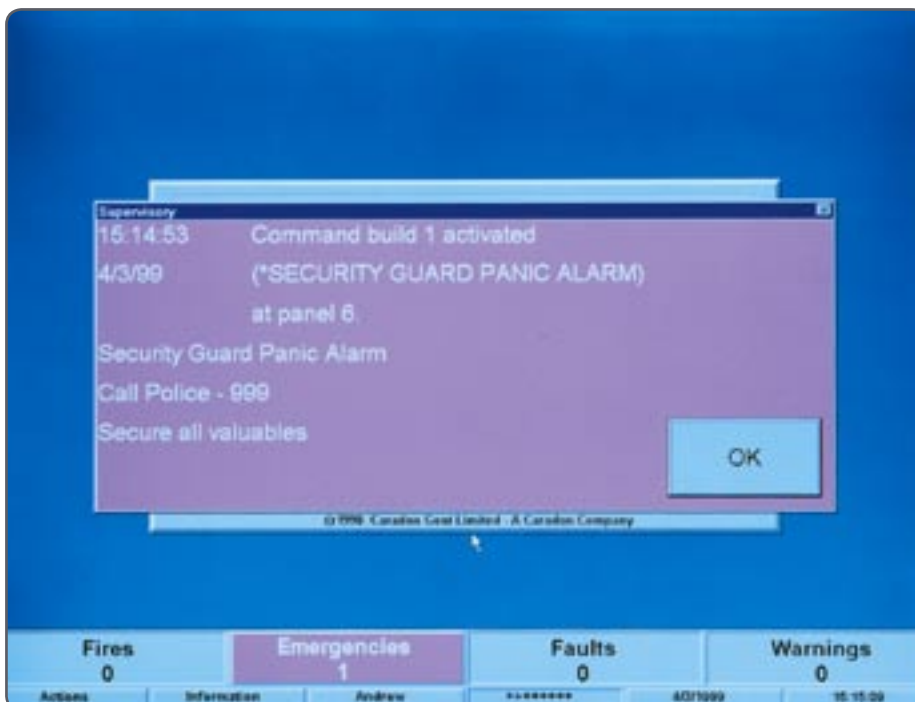


Supervisor makes day-to-day management of the fire system easy:

- Clear and specific fault messages,
- Access to the powerful system browser
- Easy control using "user action" buttons



6 System Links



Supervisor can link to other systems to provide high priority emergency alarms.

This allows customers to use the power of the Vigilon network to leverage extra value from the fire system, for example:

- Panic alarms
- Gas alarms
- Intruder alarms

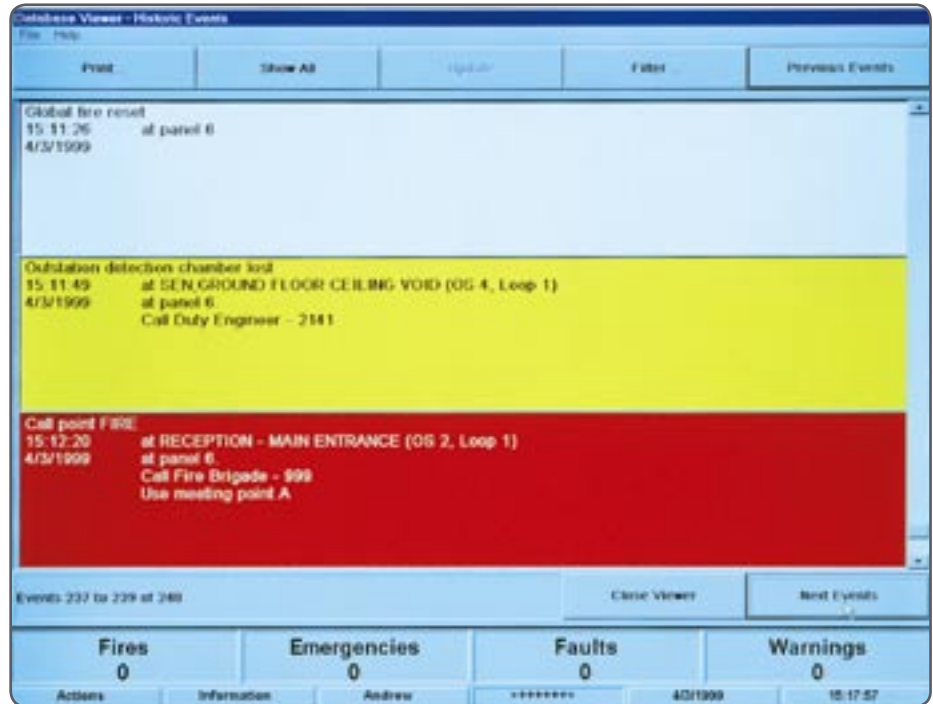
Historic Event Log records everything that happens on the fire system in a database. Powerful filtering tools make it easy to locate specific events and monitor trends. Supervisor will also back-up the log to provide a continuous history of events on the fire system.

Programmable "User Action" buttons make day-to-day control of the fire systems as easy as pressing a button.

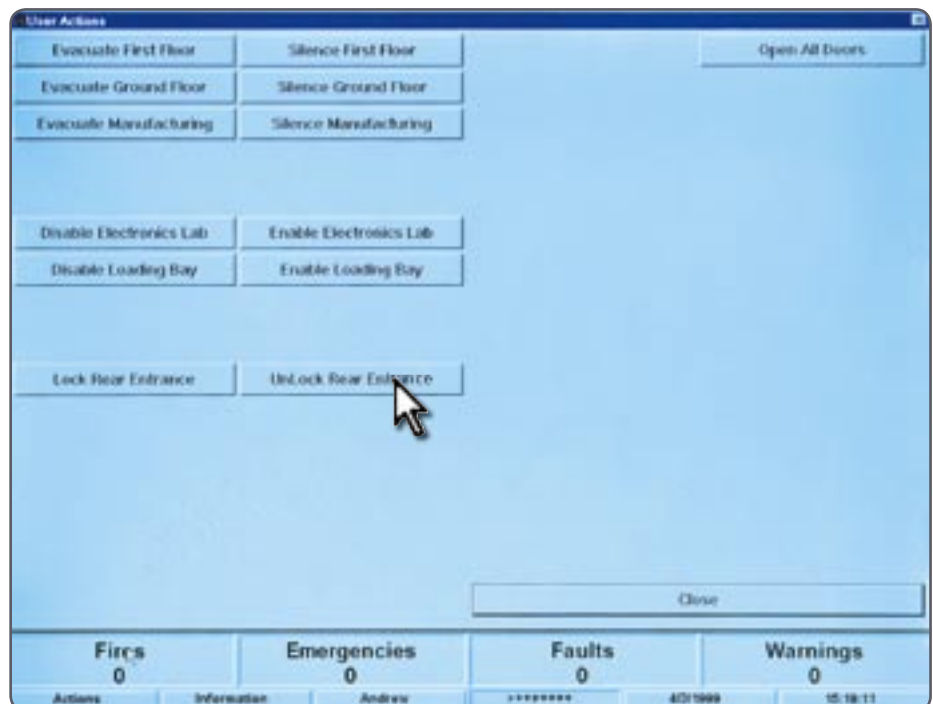
Up to 62 buttons can be programmed to perform tasks such as:

- Isolation of zones of detectors or sounders.
- Manual evacuation of parts of the building or site.
- Control of other systems e.g. unlocking doors.

7 Event Log



8 User Action Buttons

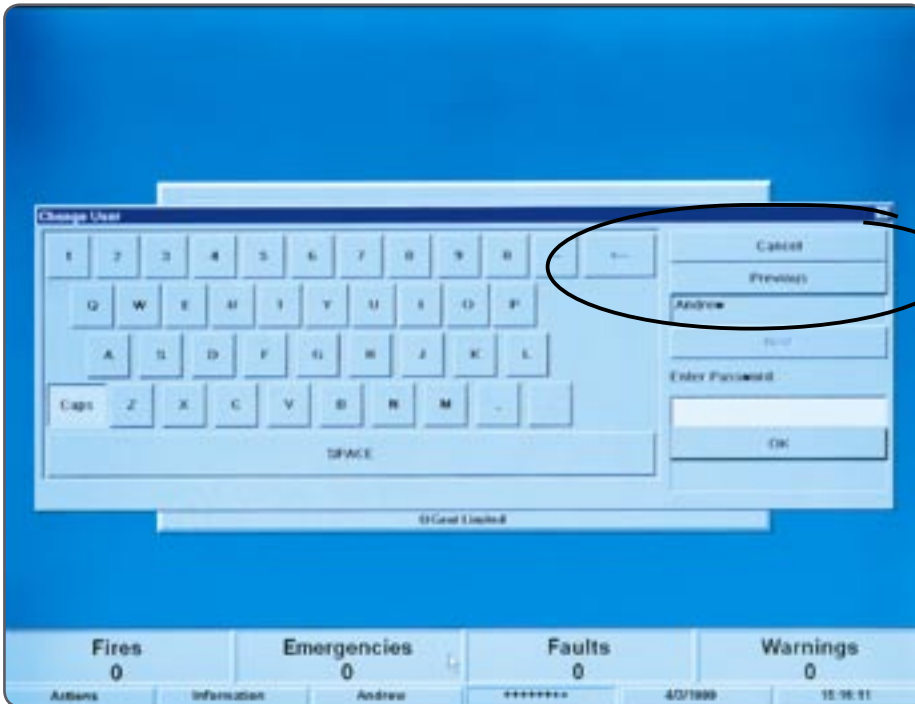


8: SUPERVISOR GRAPHICAL DISPLAY

Supervisor

GENT
by Honeywell

9 Security



Security and access control are one of the important considerations for the fire system manager.

Supervisor provides login names for each user with individual passwords. Each time a user logs-in it is recorded in the historic events log, providing a continuous audit trail.

10 Ergonomics



So many software products fail to consider even the most basic principles of ergonomics.

Gent has combined innovative design with hours of user testing to design a unique user interface, tailored specifically for the needs of a fire information system.

We are proud to claim to have the most user-friendly Graphical User Interface available for a fire system.

GENT

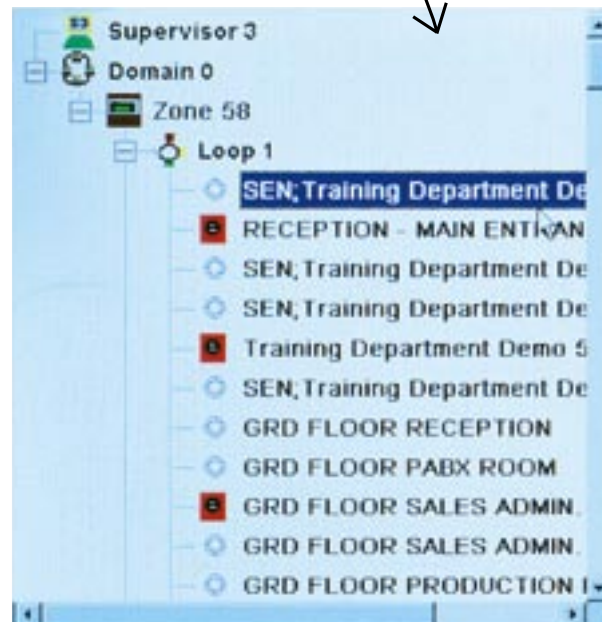
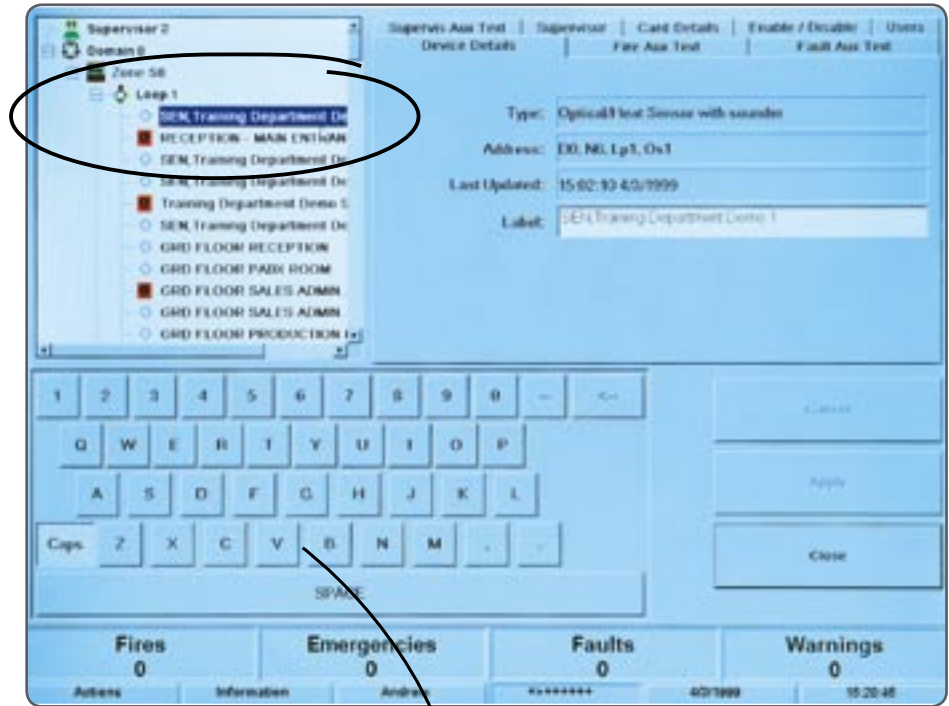
by Honeywell

8: SUPERVISOR GRAPHICAL DISPLAY

Supervisor

- The powerful System Browser is unique to the Gent Supervisor. For the Site Engineer or Fire System Manager, it provides easy access to powerful functions.
- Quickly browse all the devices on the fire system. Unique icons make identification easy.
- Select devices for isolation using the location label stored in the fire alarm panel. No need to keep referring to printed lists to find device addresses.
- Single operation to disable all the fire outputs on a panel makes silent testing quick and easy.
- Easy to modify device location labels and auxiliary text. Any changes are automatically backed-up.

11 System Browser



8: SUPERVISOR GRAPHICAL DISPLAY

GENT

by Honeywell

Supervisor

Feature Set

- Remote access to a Supervisor via a customer LAN.
- Remote access to a Supervisor via a dial in modem.
- Touch screen technology.
- Link to other systems via the Vigilon control panel to provide additional alarms.
- Display global fire/faults/warnings/emergencies.
- Historical event log records all activity in a data base.
- Programmable 'User Action' buttons to perform tasks such as isolation of zones at the touch of a button.
- Logins and passwords control user access to Supervisor.

Typical Schematic Diagram

